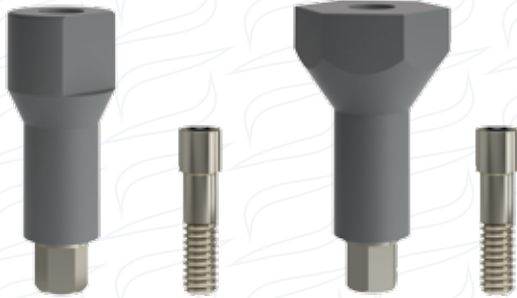


# Prosthetic components for digital scan

(for InthEx® connection)



Intraoral scanbody

Laboratory scan abutment

## **Intraoral scanbody**

To be placed in the first surgical steps or after healing of soft tissues directly above the implants in the patient oral cavity.

## **Laboratory scan abutment**

To be inserted on an analogue in a model.



Intraoral scanbody for straight conical abutments

Laboratory scan abutment for straight conical abutments

## **Intraoral scanbody**

To be placed in the first surgical steps or after healing of soft tissues directly above the implants in the patient oral cavity.

## **Laboratory scan abutment**

To be inserted on an analogue in a model.



Intraoral scanbody for tilted conical abutments

Laboratory scan abutment for tilted conical abutments