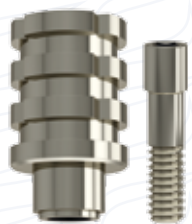


Prosthetic components for welding and syncrystallization (for InthEx® connection)



Retentive titanium abutment for welding, "KPTR SA" series



Internal flat titanium abutment for welding (L 9 - 12 mm), "SPTR" series



Titanium cape for welding for flat conical abutment, "MCF_" series



Titanium rod for welding

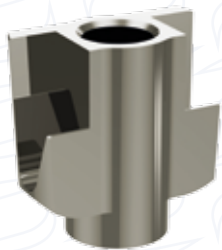
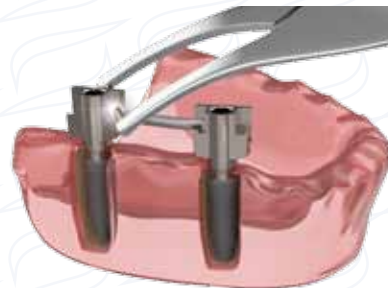
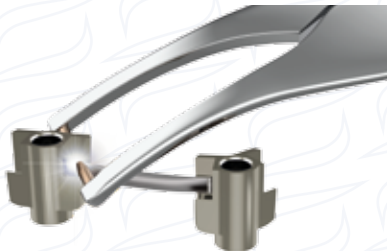
FICS™ | FIXING
INTRAORAL
CONTINUING
SOLDERING

FICS™ is a Bioservice patent that allows you to rigidly fix different implants among them by using pre-formed titanium rods, with bonding or welding technique (direct or not direct).

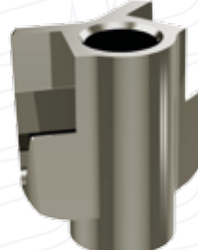
Bonding



Welding



Titanium cape
for flat conical
abutment,
"MCF" series



Titanium cape
(tilted by 45°)
for flat conical
abutment,
"MCF" series

FICS™ Kit for InthEx Connection

It is available a Kit that includes:

- n.2 Titanium rods Ø 1.5 mm and length 150 mm
- n.2 Titanium rods Ø 2 mm and length 150 mm
- n.3 FICS CMFT SA Capes (prosthetic screws included)
- n.3 FICS CMFT SA45 Capes (prosthetic screws included)