

Prosthetic components for screw-retained prostheses with multiple elements (for InthEx® connection)



Titanium retentive rotational abutment, "KPTR" series



Titanium rotational abutment (length 9-12 mm), "PTR" series



Rotational abutment for bonding, PTRI series

To create the aesthetic and functional optimal conditions in order to perform the final device.



Calcifiable rotational abutment, "CSI" series

Since they are customizable, these components can be partially or totally ceramised by the technician.



Straight conical abutment, "MC" series



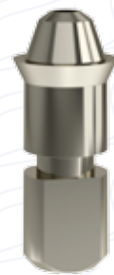
Conical abutment tilted by 17° and 30°, "MC" series



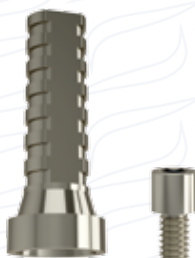
Healing cap for conical abutments, "MC" series



Transfer for impression for conical abutments, "MC" series



Laboratory analogue for conical abutments, "MC" series



Titanium cape for conical abutments, "MC" series



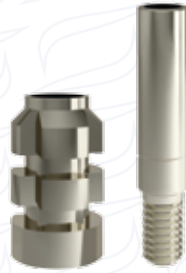
Calcifiable cape for conical abutments, "MC" series



Flat conical abutment, "MCF_" series



Healing cap for flat conical abutments, "MCF_" series



Transfer for impression for flat conical abutments, "MCF_" series



Laboratory analogue for flat conical abutments, "MCF_" series



Titanium cape for flat conical abutments, "MCF_" series



Calcifiable cape for flat conical abutments, "MCF_" series



Star prosthetic screw for angled channel for MES system 18VPC

Kit MES® per InthEx Connection

It is possible to buy the KIT that includes:

- 8 Star screws for angled channel (18VPC)
- 1 Ball wrench for handpiece connection (CC18)
- 1 Manual handling for ball wrench for handpiece connection (CMP18)

