

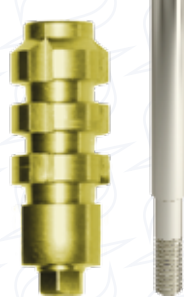
Prosthetic components for impression

(for InthEx® connection)



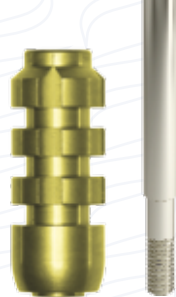
Transfer for impression, "TI" series

Per closed tray technique



Retentive transfer for impression, "TK" series

For pick up technique



Flat retentive transfer for impression, "TKF" series

To detect a good impression on implants in order to perform the more suitable technique based on the prostheses to realise.

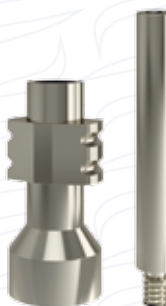


Laboratory analogue

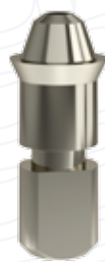


Laboratory analogue for R Thunder implant

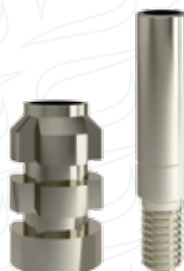
To reproduce the correct position of the implant from the transfer on the laboratory models.



Transfer for impression for conical abutments, "MC" series



Laboratory analogue for conical abutments, "MC" series



Transfer for impression for flat conical abutments, "MCF" series



Laboratory analogue for flat conical abutments, "MCF" series